

HOW TO ASSEMBLE YOUR PDF PATTERN

PDF Pattern Symbols



The small house symbol is used to match up the top and/or bottom of each pattern piece by row.

Assembly Instructions

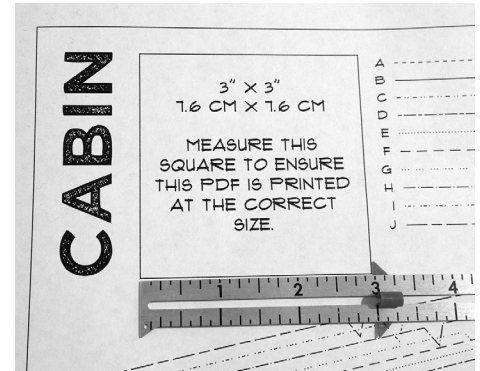
1. Print out page 1 of your PDF pattern. Make sure your printer is set to print the image at 100% and/or that scaling is turned off

2. Measure the 3"x3" (7.6cm x 7.6cm) test square. If it is not the correct size, check your printer settings and make sure that your pdf is printing at 100% and that 'shrink to fit' is not selected.

3. Print the rest of your pattern pages and try to keep them in order if you can.

4. Lay out the first page. It will have half a house symbol at the bottom edge.

5. Pick up the next page and trim off the top border. Tape it down to the first page, aligning the borders and matching the house symbol.



CABIN

RENOVATION TWO

3" X 3"
7.6 CM X 7.6 CM

MEASURE THIS
SQUARE TO ENSURE
THIS PDF IS PRINTED
AT THE CORRECT
SIZE.

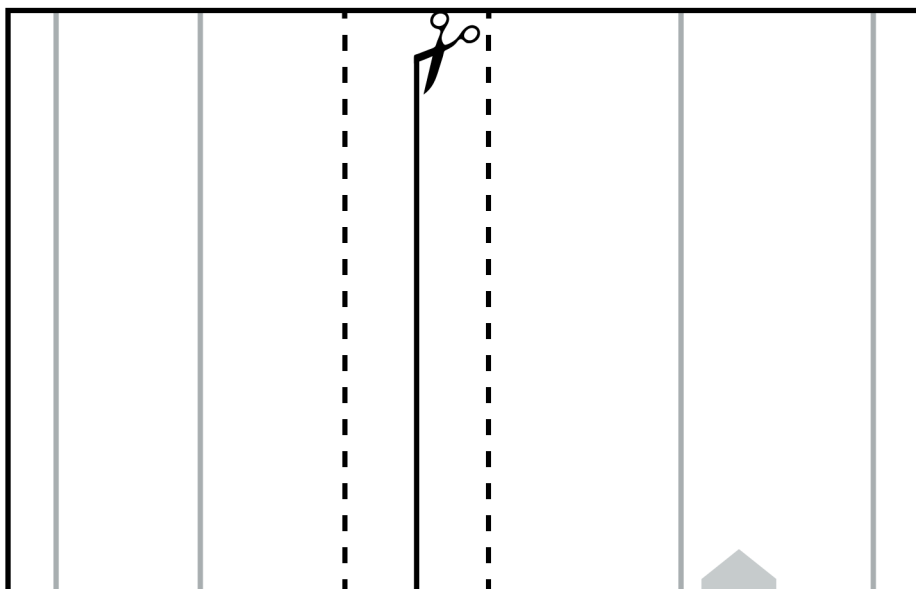
FOLD

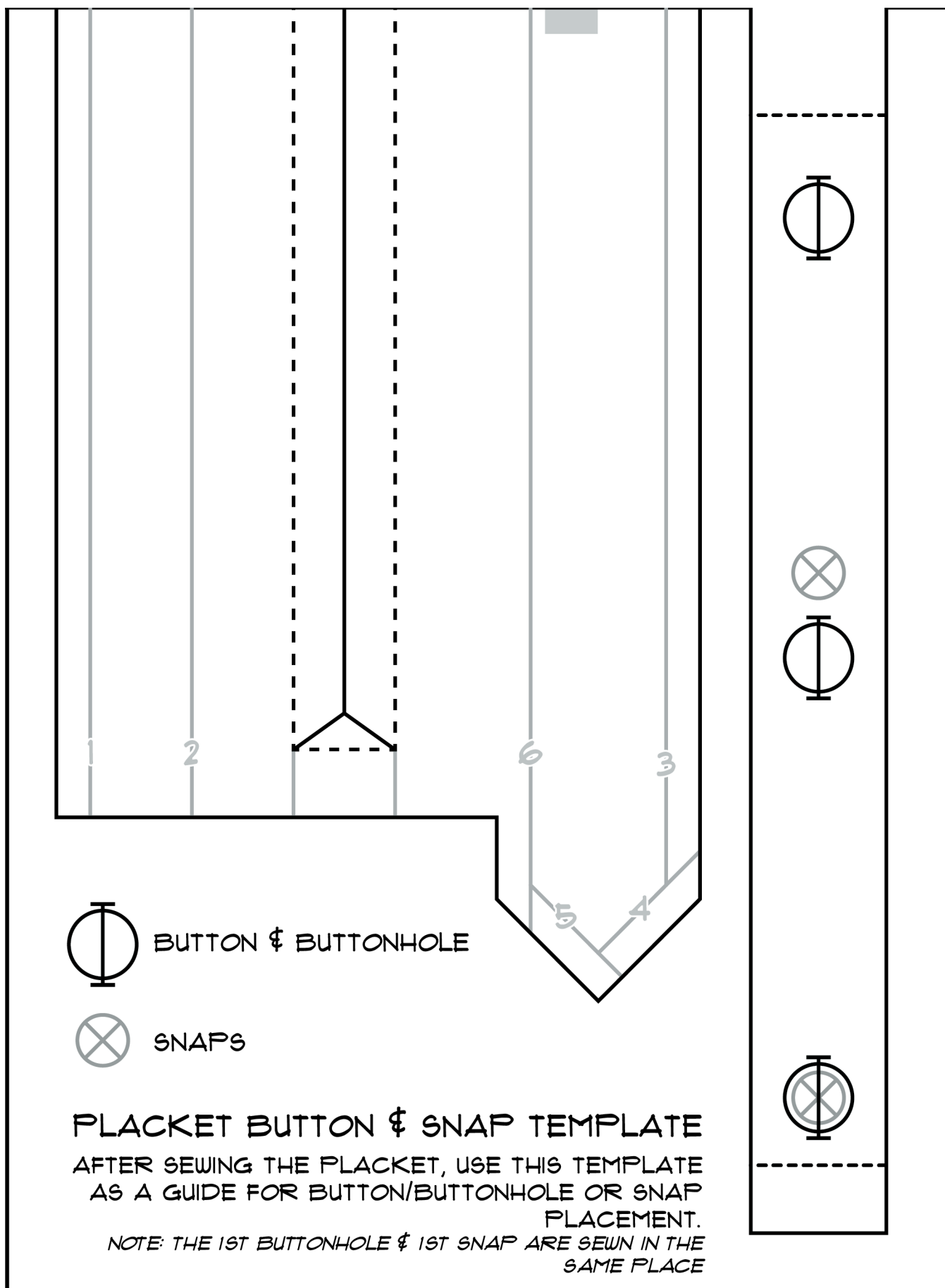
CUT

SEW




CABIN PLACKET

CUT 1 FROM WRONG SIDE OF FABRIC. TRANSFER
MARKINGS.



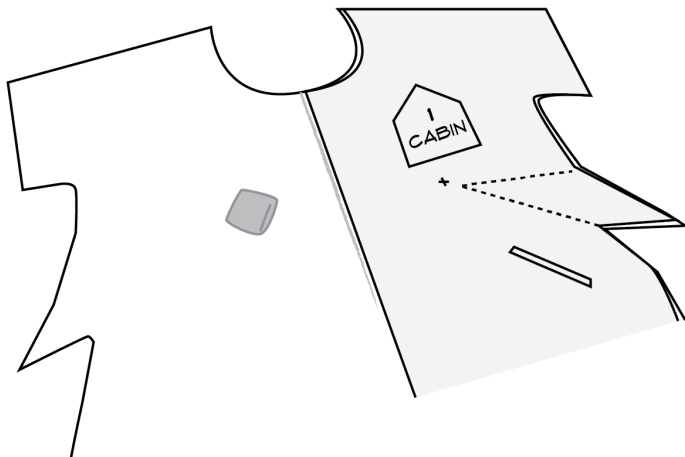


INSTRUCTIONS

-  Right side of main fabric
-  Right side of bias tape & placket
-  Wrong side of both

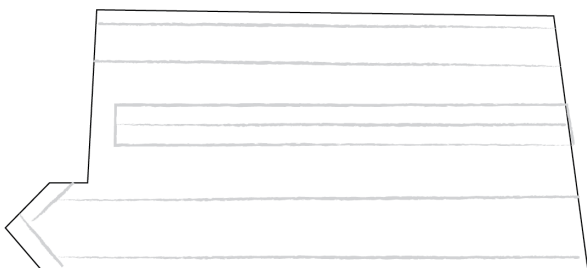
Cut out all pattern pieces, including the placket piece. Be sure to cut the placket with the wrong side of the fabric facing up.

1. With your Cabin wrong right side up, lay out the front pattern piece on top of your fabric to find the center front line. Mark from the neckline down about 10" along this line.



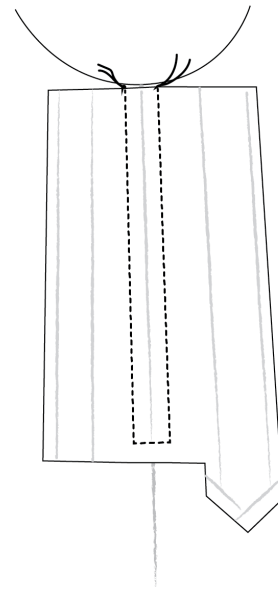
2. Cut a 2nd placket from interfacing and fuse or sew to the wrong side of the placket piece. **If your fabric is thick or you want a softer, less structured placket, omit the interfacing.**

3. Copy all of the fold, sewing, and cutting lines from the pattern onto the wrong side of your placket piece. Do not cut along the 'cutting line' inside the placket piece until instructed.

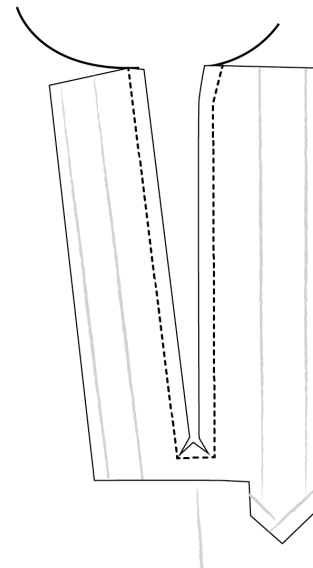


4. With the wrong sides of both pieces facing up, align the center cutting line of the placket piece with the marking you made on the center front of the front piece. Pin the placket in place through this line.

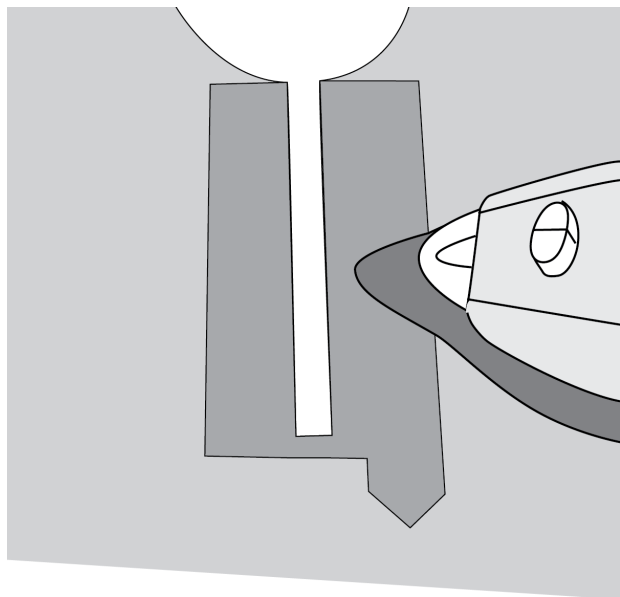
Starting from the neckline edge, sew along the sewing line, switching to a shorter stitch length when approaching the 1st corner and switching back to a normal stitch length after sewing the 2nd corner.



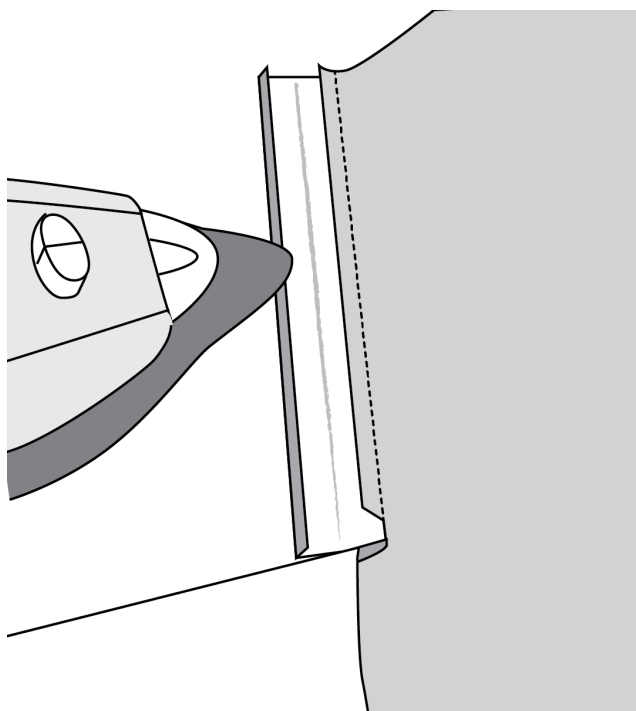
5. Cut along the lines inside the sewn rectangle, stopping just short of the corner stitching.



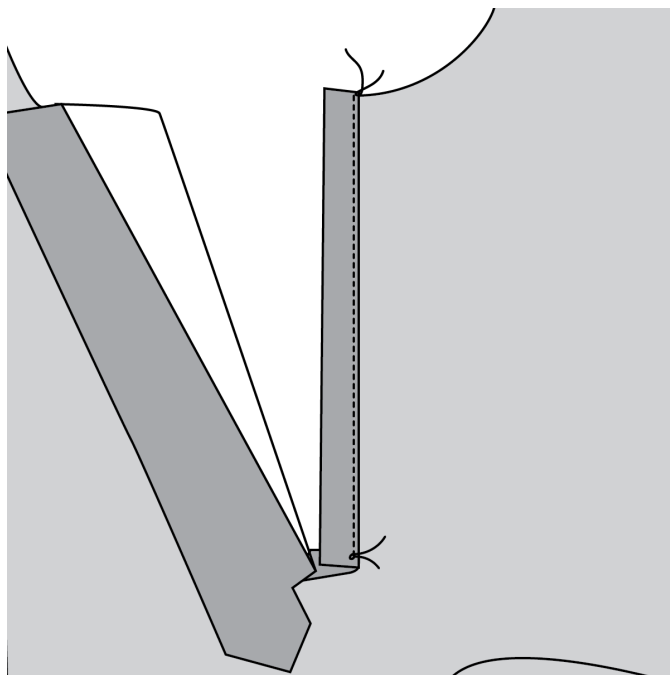
6. Turn the placket piece to the right side of the garment and press.



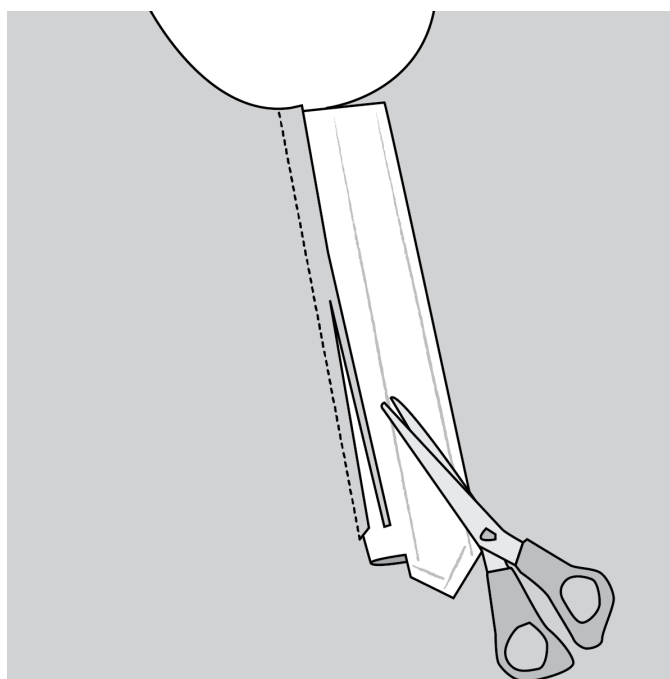
7. With the left side of the placket out of the way, press the seam allowance of the right side towards the placket, then fold over 1/4" along the opposite edge (fold line #1) and press.



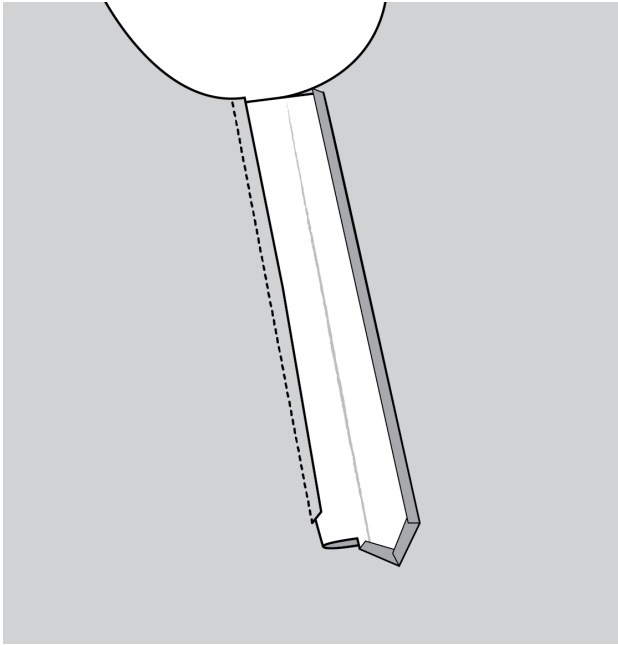
8. Fold over the right placket along line #2 towards the seam allowance, overlapping it slightly. Edgestitch in place from the neckline down. If your fabric is shifty or very thick, hand baste the placket in place before sewing on the machine.



9. Press the seam allowance of the left placket extension towards the placket. Trim away 1/4". This reduces bulk and creates a more level surface for sewing buttonholes.

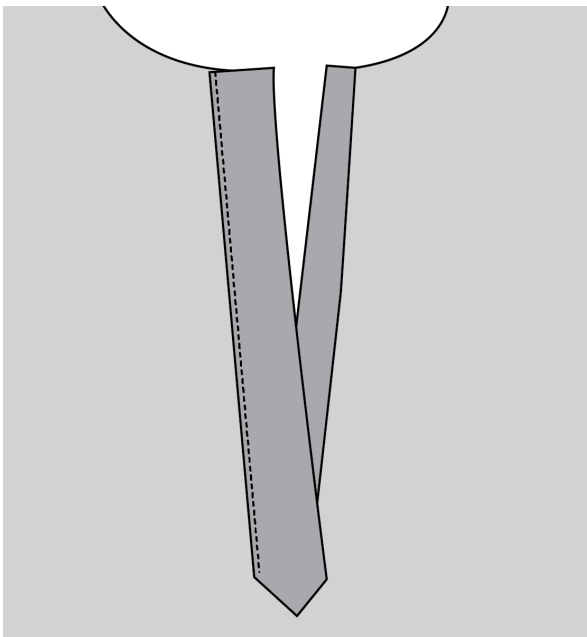


10. On the left placket, fold over 1/4" along each diagonal edge of the pointed placket extension (line #3&4) and press, then fold over 1" (Line #5) and press.

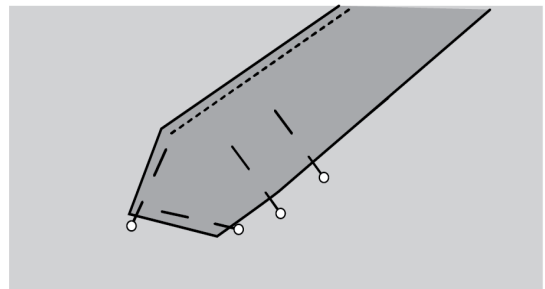
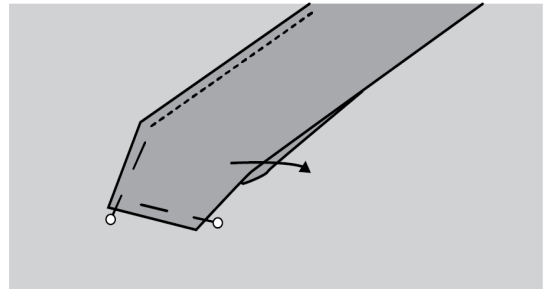


11. Fold the placket along line #6 towards the seam allowance, overlapping it slightly. This side of the placket is slightly wider than the right side, so it should overlap the right placket a tiny bit on both sides.

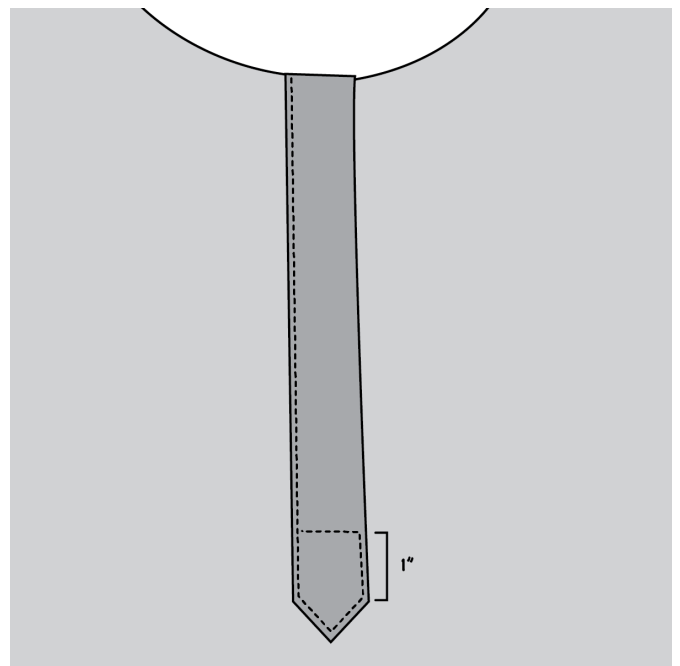
12. With the inside placket out of the way, edgestitch along the top placket. Stop at the first corner of the placket bottom, but do not remove it from the sewing machine



13. Rearrange the placket extensions so that the right placket is aligned underneath the left. Be sure that the left placket covers the right and shift the left side over if necessary.

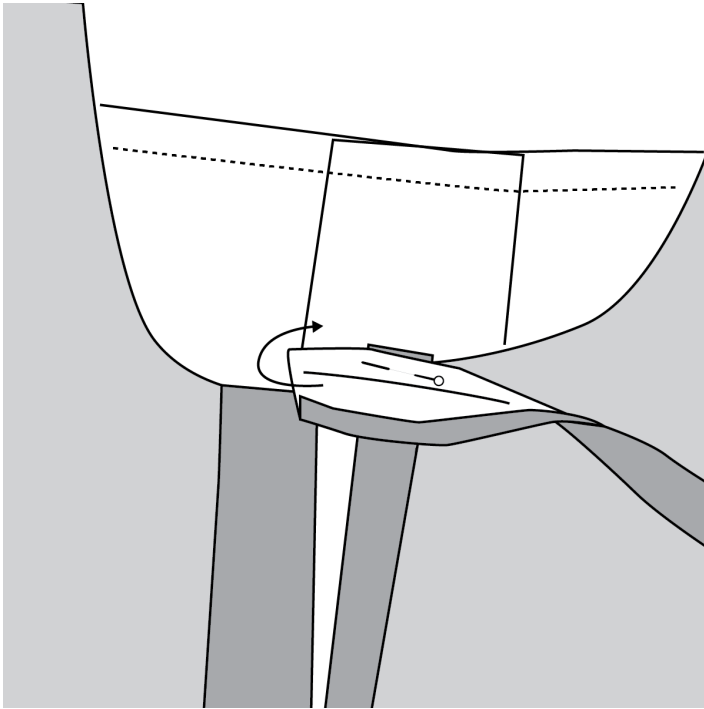


14. Continue sewing around the pointed end, pivoting at each corner. After the 3rd corner, continue sewing up 1" along the right side of the left placket. Pivot at this point and sew across the placket.

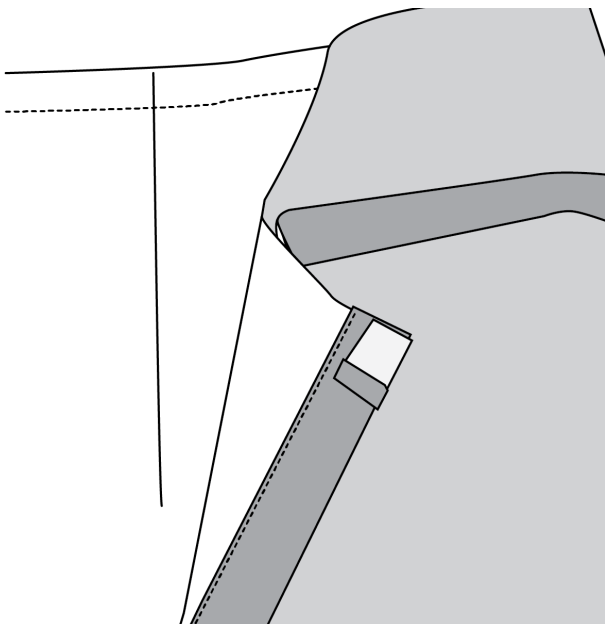


15. Assemble your Cabin as instructed in the pattern until you reach the neckline binding step. Skip sewing the neckline binding and instead sew the 2nd shoulder seam. Finish with **FF** or **fff** seam.

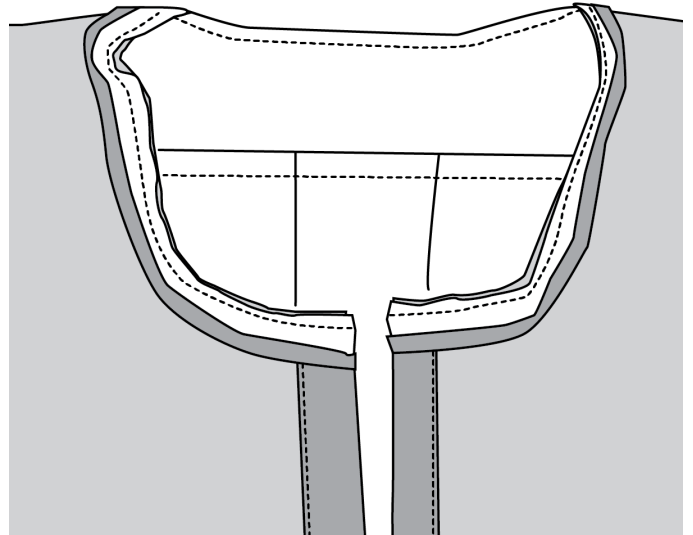
16. Starting on one end of the neckline at the placket, pin the bias tape on as shown leaving a bit extra at the end.



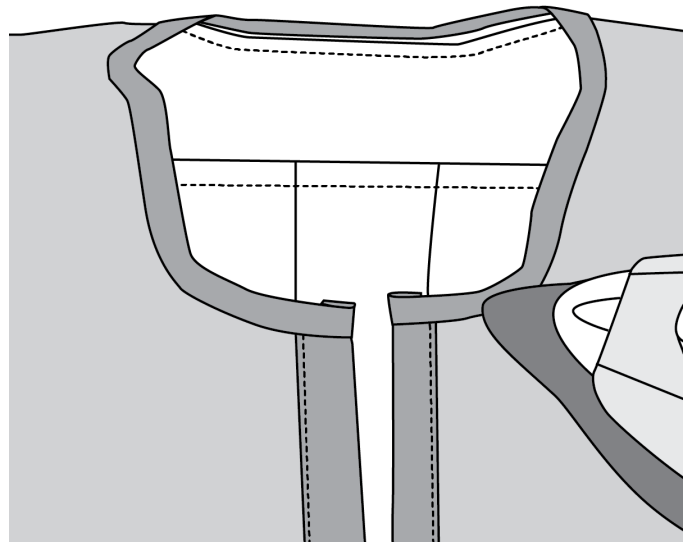
17. Fold this extra bias tape around the placket and pin in place.



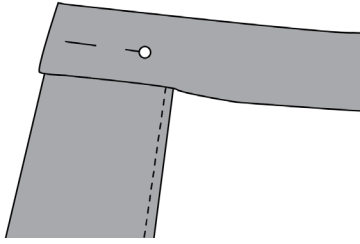
18. Sew the bias tape to the neckline using a **1/4" seam allowance** as in the Cabin instructions. When you reach the opposite side of the neck opening, trim the bias tape, leaving a bit extra. Fold this extra around the placket and finish sewing the neckline.



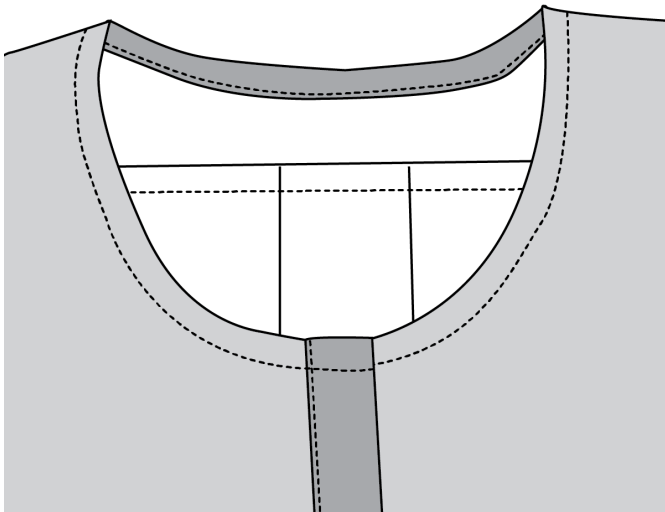
19. Fold the bias towards the neckline and press.



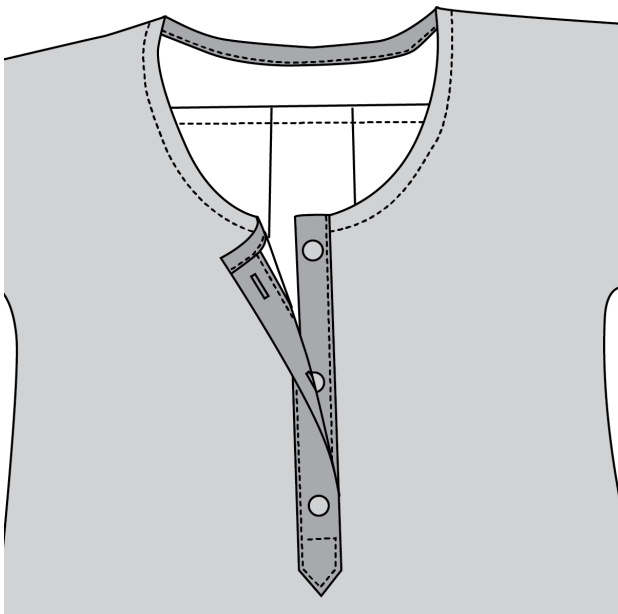
20. Fold the bias tape down towards the garment and pin or baste in place. You might have to tuck in a bit of the bias tape edge underneath so it doesn't show.



21. Edgestitch your bias binding in place around the neckline.



22. Using the buttonhole & snap template as a guideline, make buttonholes or sew snaps on to finish your placket. Or, leave it as is for more of a tunic/overshirt style.



NOTES

This pattern calls for 1/2" buttons or 3/8"-1/2" snaps.

You can make this placket longer and shorter if you wish. Simply shorten the placket piece from the top rectangular edge. The placket itself will be 1/4" shorter than the rectangular dashed sewing line on the pattern piece.

If you would like to sew a squared bottom placket, rather than the pointed end, simply trim off the point (but leave the rest of the extension).